



OAK WOOD

Turning your dream into an Address

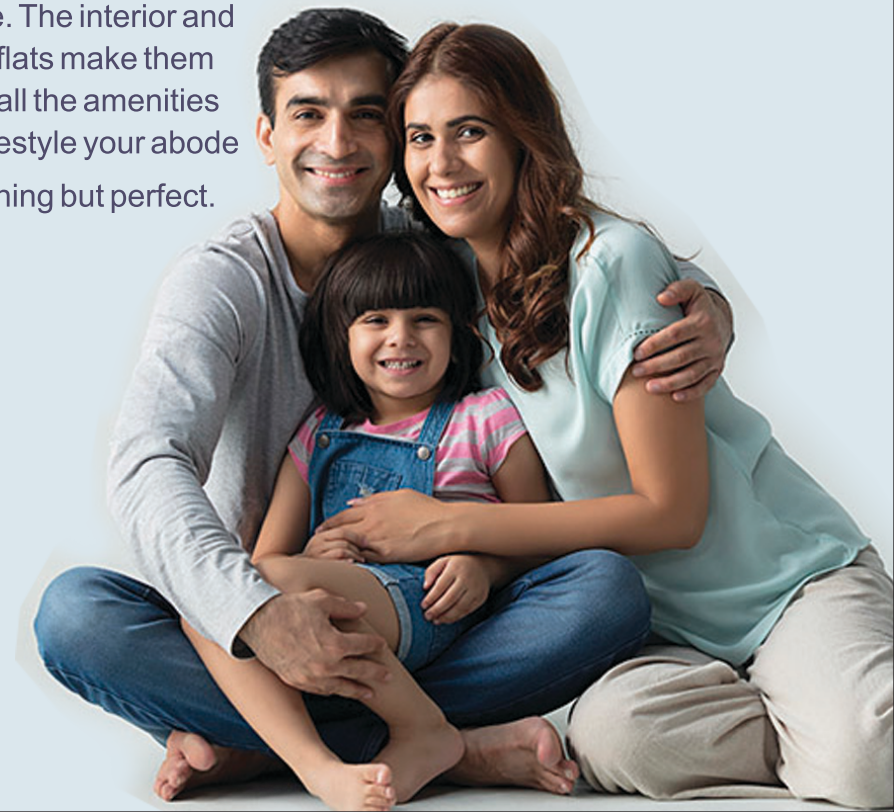
NEAR PANDRA BAZAR SAMITI (NH-75) RANCHI

About the Project

Living spaces designed with a passion towards creating an experience. Homes created with your lifestyle as a blueprint, A standard of living that entwines itself smoothly with the ways of nature, While working towards a distinctly luxurious way of life.

Presenting multistoried building offer 2/3 BHK flats. The delightful open areas create a community atmosphere, with a large landscaped garden, apart from ample green area dedicated to each flat, the project intends to create a picture perfect home for you. With a strong project management and real estate development experience of its developers.

Oak Wood shall witness application of the latest concepts of architecture. The interior and exterior finish of the spacious flats make them instantly desirable. Providing all the amenities that make for a comfortable lifestyle your abode at **Oak Wood** shall be nothing but perfect.



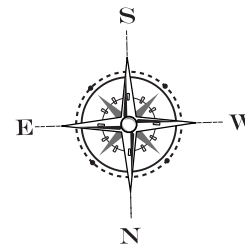


3D VIEW OF COMMERCIAL COMPLEX



TYPICAL FLOOR PLAN
(Ground to 4th Floor)

Ground to 4th Floor	
Area in Sqft	5225 SFT



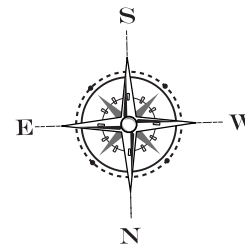


3D VIEW OF BLOCK - B

TYPICAL FLOOR PLAN OF BLOCK B 1st FLOOR



BLOCK 'B' 1st FLOOR		
Flat Name	Flat Type	Area in sqft.
FLAT - A	3 BHK + 2T	1510
FLAT - B	3 BHK + 2T	1600
FLAT - C	3 BHK + 2T	1515
FLAT - D	2 BHK + 2T	1090
COMMUNITY HALL	--	2135



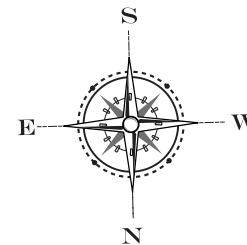


TYPICAL FLOOR PLAN OF BLOCK B (2nd to 10th Floor)



BLOCK 'B' 2nd to 10th' FLOOR

Flat Name	Flat Type	Area in sqft.
FLAT - A	3 BHK + 2T	1510
FLAT - B	3 BHK + 2T	1600
FLAT - C	3 BHK + 2T	1515
FLAT - D	3 BHK + 2T	1510
FLAT - E	3 BHK + 2T	1520
FLAT - F	2 BHK + 2T	1090



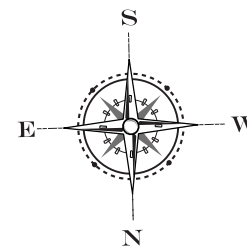


3D VIEW OF BLOCK - C

TYPICAL FLOOR PLAN OF BLOCK C (1st Floor)



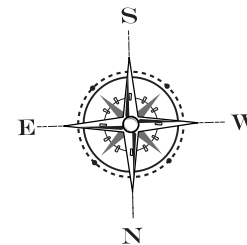
BLOCK 'C' 1st FLOOR		
Flat Name	Flat Type	Area in sqft.
Gym, Healthcare & Indore Game		2280
Flat - C	3 BHK + 2T	1515
Flat - D	3 BHK + 2T	1510
Flat - E	3 BHK + 2T	1520
Flat - F	2 BHK + 2T	1090



TYPICAL FLOOR PLAN OF BLOCK C (2nd -11th Floor)



BLOCK 'C' 2nd to 11th' FLOOR		
Flat Name	Flat Type	Area in sqft.
FLAT - A	3 BHK + 2T	1510
FLAT - B	3 BHK + 2T	1600
FLAT - C	3 BHK + 2T	1515
FLAT - D	3 BHK + 2T	1510
FLAT - E	3 BHK + 2T	1520
FLAT - F	2 BHK + 2T	1090



AMINITIES

COMMON FACILITIES

Water Arrangements

Connection from deep tube-well to overhead tank connection with electric pump.

Parking

Floor Checkered tiles / interlocking pavers / Industrial coating.

Staircase

Lobby area, Tread, Riser & Skirting to be of Marble/Granite. Stainless steel along the staircase.

LIGHTNING ARRESTER

Thundering & lightning arrester to be installed on roof tops so that to avoid any damages to building caused by lightning.

FIRE & SAFETY

Easy Handling fire Hydrants system in all floors with fire alarm and public alert system in all floors and parking areas. Water back up through underground water storage tanks and overhead storage tank.



RAIN WATER HARVESTING SYSTEM

along with ground water recharge pit to be constructed as per Indian specification & design

CAR PARKING MANAGEMENT

Car Parking Management Reserved parking space for each residential of Oak Wood. Entire parking is well designed (double storeyed) to suite the number of parks provided. Parking signages and equipments at required places to ease the driving.



COMMUNITY HALL, GYM & MORE...

Health is wealth. We well understand how your health is important part of your life. We offer sophisticated Gymanism, Yoga and meditation hall for total care of your body & mind. So experience a new change in Oak Wood.

Aminities

THAT SUITS YOUR

lifestyle

CAR PARKING



COMMUNITY HALL



GYM



POOL TABLE

SPECIFICATION

STRUCTURE

RCC framed structure. Sesmic re-inforcement design. Anti termide treatment exclusively in all foundation & plinth.

WALLS

10 inch thick external & 5 inch thick internal partition walls. All internal walls and ceiling will have plaster and plaster of paris finish.

DOOR

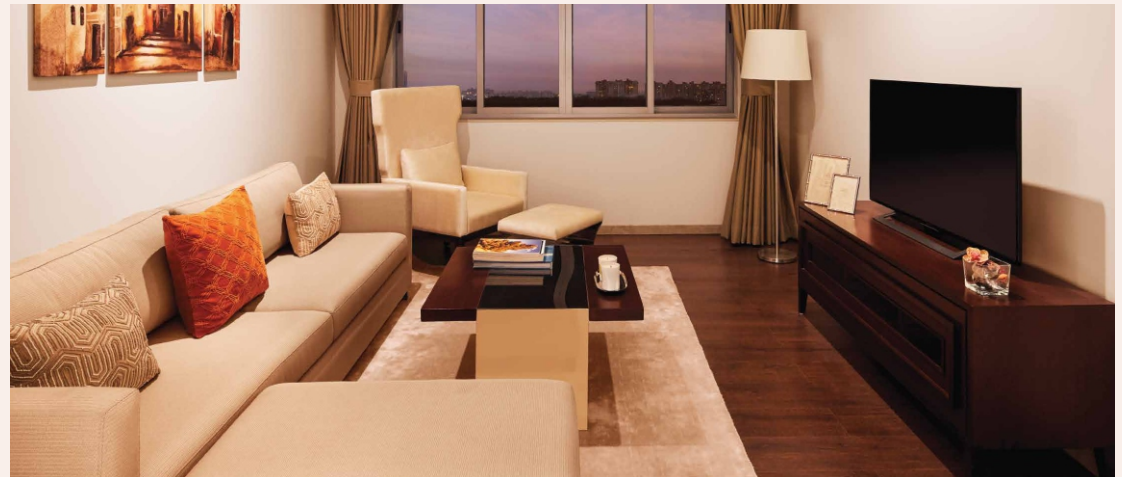
Wooden Frame with flush type shutters of wood (without painted). Ultra locking in main door and cylindrical lock in all bedrooms and toilet doors.

WINDOWS

Three track sliding aluminium windows with two glazed and one track mosquito net provision.

KITCHEN

Black granite top in kitchen platform, ISI marked stainless steel sink . Pipeline for hot and cold water provision



SANITARY FITTINGS

All C.P. or brass fitting of standard ISI mark. White glazed vitreous sanitary ware.

FLOORS

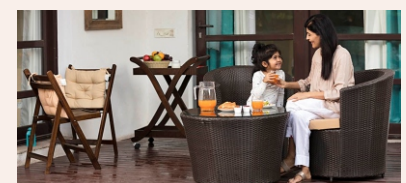
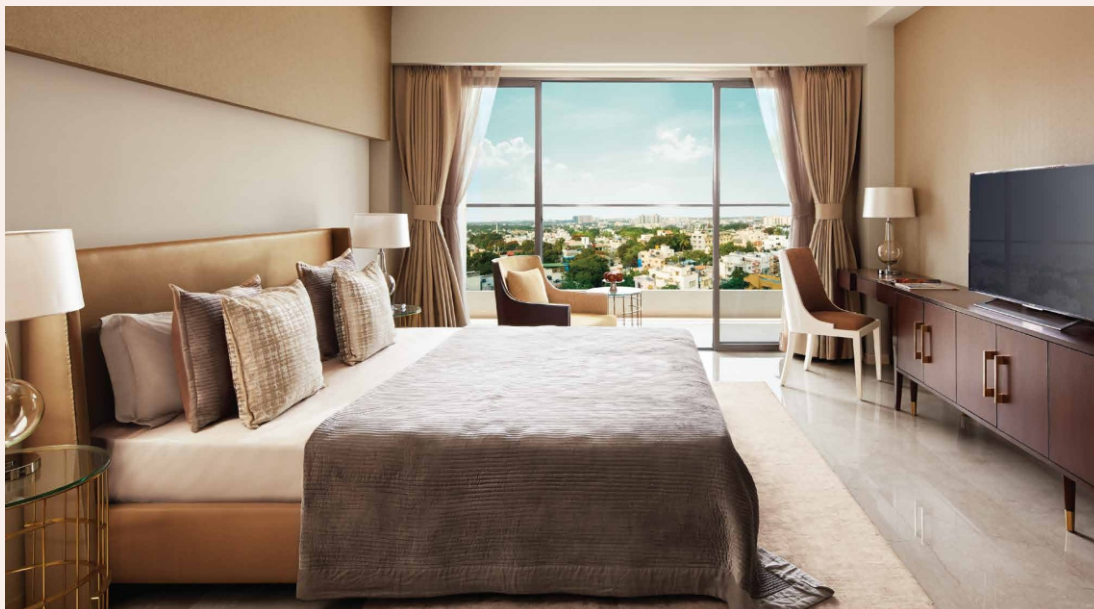
Vitrified / Ceramic floor tiles in whole flats. (Make size and quality as per discretion of the builder)

TOILETS

Flooring in ceramic tiles and dado in theme based ceramic tiles upto 7'0" hight. Corner/Full basin will be provided in all toilets. Pipes for hot and cold water provided in all toilets. (Geysers not provided)

ELECTRIFICATION

Concealed wiring with standard makes modular fitting and fixtures. Fan regulators, provision for AC points in all bedrooms, living and dining room and (Television) point in drawing room and Master bedroom shall be provided. (A.C. fan, Tubelights not provided)



LOCATION PLAN



DISTANCE CHART

1. Pandra Bazar to Oak Wood	- 0.8 K.M.
2. Piska More to Oak Wood	- 1.5 K.M.
3. Ratu Road to Oak Wood	- 3.5 K.M.
4. Hatia Station to Oak Wood	- 12.5 K.M.
5. Birsa Munda Airport to Oak Wood	- 13.5 K.M.
6. Ranchi Railway Station to Oak Wood	- 9.5 K.M.

PROMOTORS & DEVELOPERS



NISITH KESHARI CONSTRUCTIONS PVT. LTD.

Off. Address : 221, 1st floor, Tirath Mansion, Main Road, Ranchi (Jharkhand)

Ph.: 9507036404, 9507035495

Website : www.nkconstruction.org.in

SITE ADDRESS

OAK WOOD'S

Near Pandra Bazar Samiti

(NH-75) Ranchi, Jharkhand - 834 005

Mob.: 9507036404, 9031079976, 9031079977

E-Mail : residencyoakwood@gmail.com